

NORIX



Kids

FURNITURE

Elle Series

The Elle Series chair and table is a fairy-tale take on kids furniture for daycares, schools and other institutional facilities like a Behavioral Health or Corrections visitation areas that might be intimidating to children. We designed this series to be a safe product for use by children that can serve as a fun distraction in potentially stressful environments.



Chair
Elephant shape



Table
with safari motif





Features That Matter

Ballastable

Ballasting offers additional security by adding weight, improving stability and reducing the risk of moving or throwing the chair.

Designed For Safety

Designed with no holes or moving parts to safeguard against potential injury.

Easy Cleanability

Bleach solutions and hospital-grade cleaners can safely be used for sanitation without affecting the surface material or color.

Extreme Durability

The heavy-duty, durable design offers enhanced safety and peace of mind – even if positioned in unsupervised spaces.

Rounded Edges

Smooth, rounded edges provide a pleasing aesthetic and contribute to a safe design.

TruColor™ Technology

Our premium TruColor™ Technology creates full and consistent coloring that is void of any streaks, speckles or other color disruptions.

Playful Design

Designed to look like playful abstraction of an elephant with a cute trunk, wiggly tail and floppy ears, it can serve as a fun distraction in potentially stressful environments.

FDA Approved & GreenGuard Gold Certified

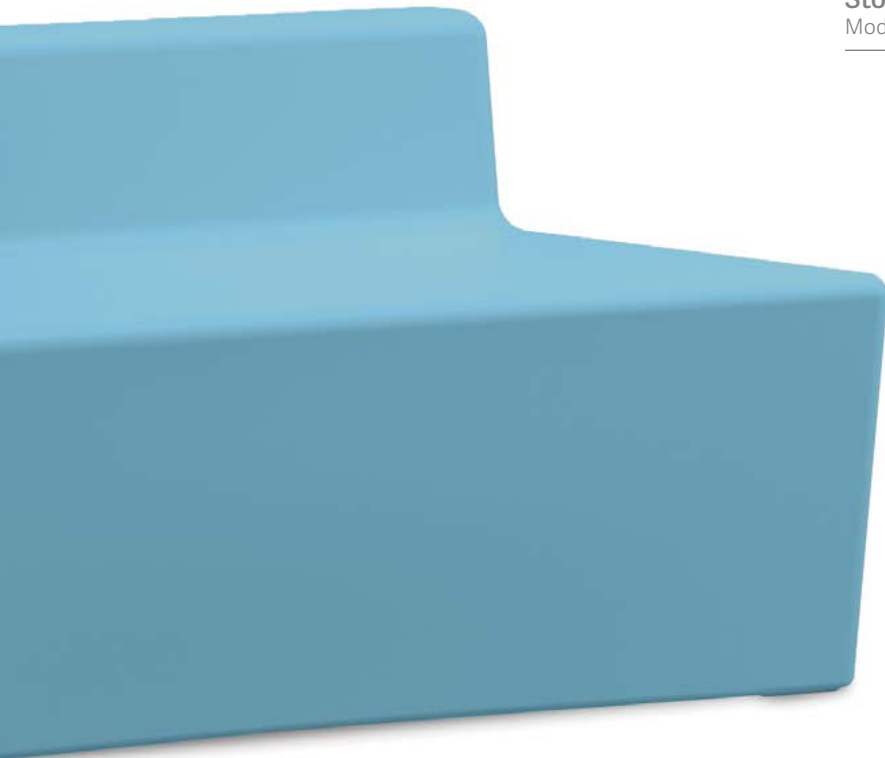
This product meets strict health-based criteria for VOC emissions and total chemical emissions, earning FDA approval and GreenGuard Gold Certification.

A-Maze Series

A-Maze is a kids furniture product from Norix® that is a one-seat wonder due to the endless configurations that can be created with this fun kids series. Its fun colors, secure construction and playful shape make this perfect for daycares, lobbies, dayrooms, play areas and any other place in your facility where children may gather. This light-weight product can be moved and re-configured as needed and is applicable to high-traffic and constant-use areas.



Stool
Modular Shape





Features That Matter

Ballastable

Ballasting offers additional security by adding weight, improving stability and reducing the risk of moving or throwing the chair.

Configurable Design

The lightweight, playful design supports a wide variety of possible configurations that can fit seamlessly into any environment.

Easy Cleanability

Bleach solutions and hospital-grade cleaners can safely be used for sanitation without affecting the surface material or color.

Designed For Safety

Designed with no holes or moving parts to safeguard against potential injury.

Extreme Durability

The heavy-duty, durable design offers enhanced safety and peace of mind – even if positioned in unsupervised spaces.

Rounded Edges

Smooth, rounded edges provide a pleasing aesthetic and contribute to a safe, kid-friendly design.

TruColor™ Technology

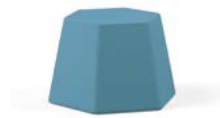
Our premium TruColor™ Technology creates full and consistent coloring that is void of any streaks, speckles or other color disruptions.

FDA Approved & GreenGuard Gold Certified

This product meets strict health-based criteria for VOC emissions and total chemical emissions, earning FDA approval and GreenGuard Gold Certification.

Hex-It Series

This multi-function marvel allows you to flip the product on one side and use it as a stool. Flip it on its other side and you have a table. It's an ideal kids seating solution with a fun shape that's ready to be configured to your space. Hex-It is adaptable, which could serve today's socially distanced classrooms well and it is easy to clean and sanitize for greater infection control.



Small
Stool / Table



Large
Stool / Table





Features That Matter

Easy Cleanability

Bleach solutions and hospital-grade cleaners can safely be used for sanitation without affecting the surface material or color.

Extreme Durability

The heavy-duty, durable design offers enhanced safety and peace of mind – even if positioned in unsupervised spaces.

Multi-Functional Design

The multi-functional design doubles as a stool or a table to create the ideal kids seating solution that can adapt to fit the needs of any situation.

Designed For Safety

Designed with no holes or moving parts to safeguard against potential injury.

Rounded Edges

Smooth, rounded edges provide a pleasing aesthetic and contribute to a safe, kid-friendly design.

TruColor™ Technology

Our premium TruColor™ Technology creates full and consistent coloring that is void of any streaks, speckles or other color disruptions.

FDA Approved & GreenGuard Gold Certified

This product meets strict health-based criteria for VOC emissions and total chemical emissions, earning FDA approval and GreenGuard Gold Certification.



Interested in our products?

Call us to schedule a tour of our showroom:
630-231-1331

One Innovation Drive, West Chicago, Illinois 60185
Phone: 630-231-1331 / Toll Free: 800-234-4900 / Fax: 630-231-4343
Printed 5/23 furniture@norix.com ©2023 Norix Group, Inc.

NORIX.COM

NORIX